



Corques Liquid Lino starts a revolution in resilient flooring. One and a half century after Frederick Walton invented linoleum, Duracryl changed the old concept of a factory manufactured linoleum in rolls and tiles to a liquid poured version of the linoleum which is applied seamlessly on site. The superior properties of Corques Liquid Lino matches all the original linoleum characteristics, and adds several more.

CLASSIFICATION EN 685 • EN 10874 • ASTM F-2034* • ASTM F-2195*

CLASS 23 DOMESTIC HEAVY
Minimum thickness 2 mm

CLASS 34 COMMERCIAL VERY HEAVY
Minimum thickness 2 mm

CLASS 43 INDUSTRIAL HEAVY
Minimum thickness 2.5 mm

TECHNICAL DATA

RESISTANCE TO INDENTATION
EN ISO 24343-1 • 0.03 mm • ASTM F-1914 • 0.001inch / 750 PSI

EFFECT OF A FURNITURE LEG
EN 424 • No damage • Static Load Limit: exceeds 1000 PSI when tested in accordance ASTM F-970-00

ABRASION RESISTANCE
ASTM D4060 -14 • CS17 • Wheels/10N/1500 cycles • 55 mg

ELECTRICAL BEHAVIOR
EN 1815 • < 2 kV

LIGHTFASTNESS
EN ISO 105-B02 • 7 - 8 • ASTM F-1515 • 7 - 8 (1-Severe change, 8-No change)

FLEXIBILITY
EN 435 • 20 mm, no cracking • ASTM F-137-08 • 0.79 inch, no cracking

RESISTANCE TO CHEMICALS
EN ISO 26987 • No changes • Passes in accordance with ASTM F-925 • No change

STAINING RESISTANCE
EN 423 • Category 1+2: level 5, Category 3: level 4/5

CIGARETTE RESISTANCE
EN 1399 • Proc A (stubbed out) ≥ level 4 • Proc B (burning) ≥ level 3

THERMAL CONDUCTIVITY
EN ISO 12524 • 0.15 W/m.K, suitable for underfloor heating • ASTM C-518-17 • 0.15 W/m.K

ACCOUSTICAL IMPACT NOISE REDUCTION
EN ISO 717-2 • ASTM E-2179 03 • ΔLw = 8dB Corques • 15dB Corques Comfort

THICKNESS SWELLING
EN 13329 • < 0,8%

WATER TIGHTNESS
EN 13553 • Watertight

SUITABILITY FOR USE IN INCIDENTAL HUMID CONDITIONS
EN 426 • Suitable

CE NUMBER
15 • DoP08CORQ017 • EN 13813:2002

CORQUES LIQUID LINO
Contains recycled content

REACTION TO FIRE EN 13501-1 • Bfl-S1 • Class 1 when tested in accordance with ASTM E-648 Critical Radiant Flux • Meets 450 or less, when tested in accordance with ASTM 662/ NFPA 258 Smoke Density

CASTOR CHAIR CONTINUOUS USE EN 425 • 25.000 • Slight change in appearance • no delamination • ASTM D-6962 • 25.000 • slight change • no delamination

SLIP RESISTANCE DIN 51130 • R9 standard / R11 upon request • EN 13893 • DS: ≥ 0,30 • Meets or exceeds the industry recommendation of >0.5 for flat surfaces when tested in accordance with ASTM D-2047

* However the ASTM F-2034 and the ASTM F-2195 are designed for sheeted or tiled linoleum, Corques Liquid Lino fulfills or exceeds all technical requirements mentioned in these ASTM normatives.

Hersteller/Producer



DURACRYL INTERNATIONAL BV

Address Elandstraat 91
2901 BK Capelle aan den IJssel
The Netherlands
Phone +31 (10) 458 85 52
Email info@duracryl.com



Check our website
WWW.DURACRYL.COM

CORQUES COLORS



Einbaupartner/Instaling partner



P&K FLOORINGGROUP GMBH

Address Maybachstraße 6
D-71397 Nellmersbach
Germany
Phone +49 (0) 7195-90662-0
Email info@flooringgroup.de

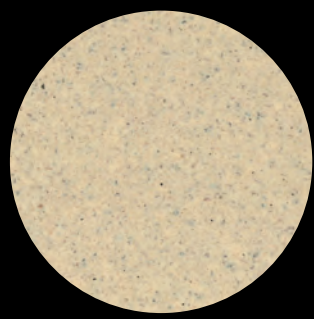


Check our website
WWW.FLOORINGGROUP.DE



CORQUES®
LIQUID LINO

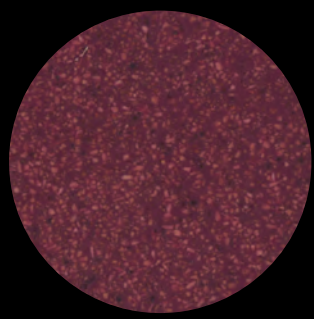




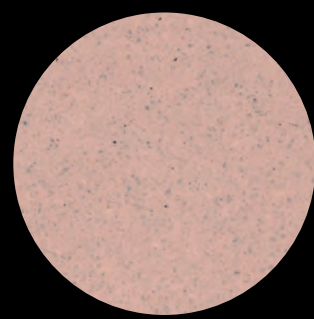
B312 S



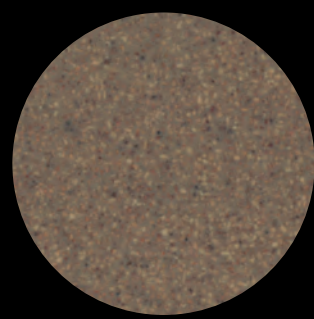
W300 S



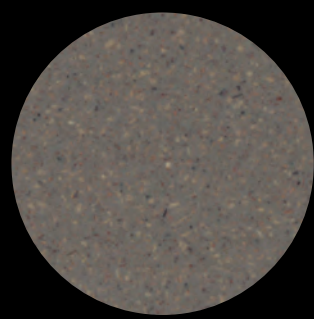
P307 M



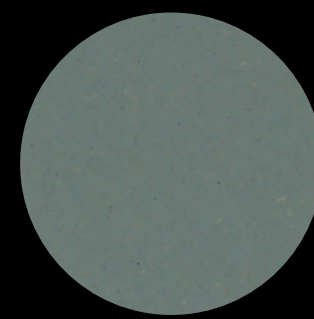
P303 S



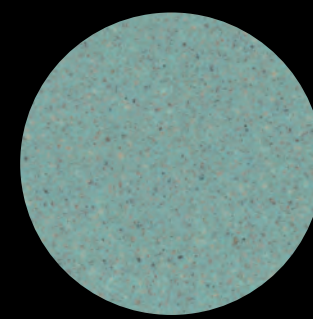
B343 L



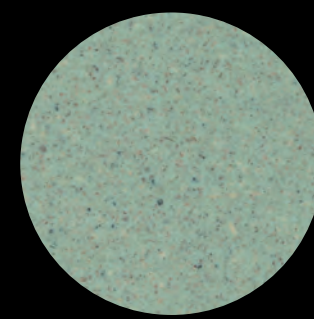
T336 M



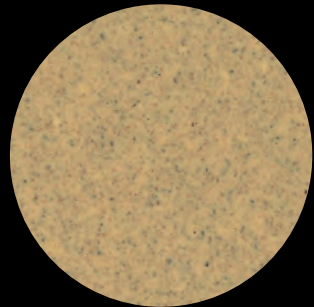
GR347 S



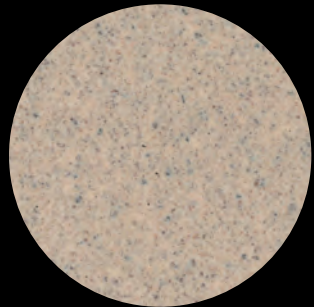
BL324 H



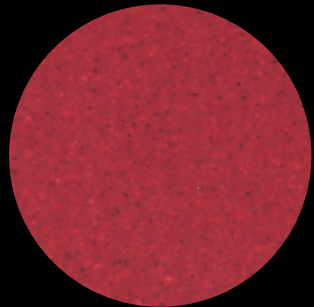
BL318 H



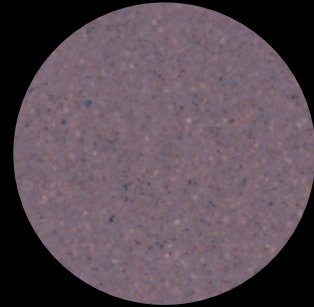
B313 H



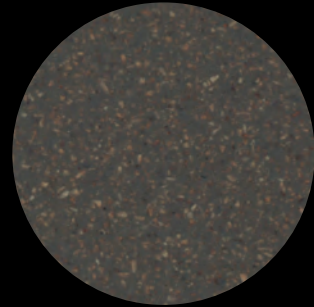
W301 H



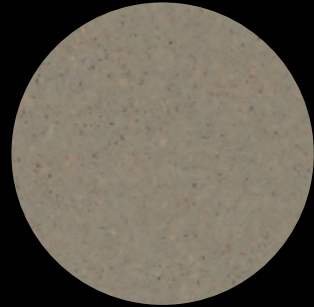
R306 H



P305 M



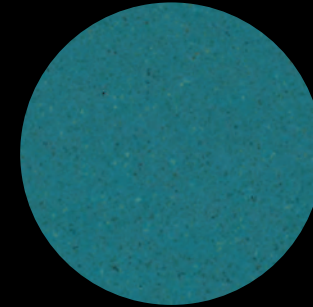
T337 L



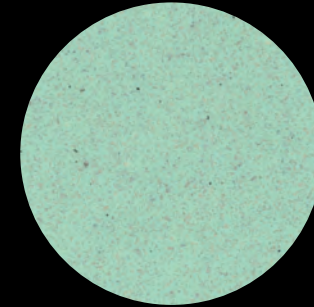
GR330 H



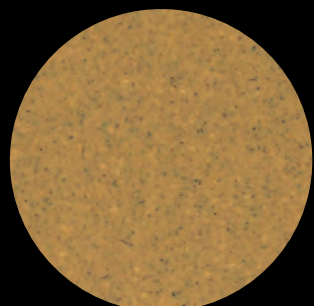
GR346 S



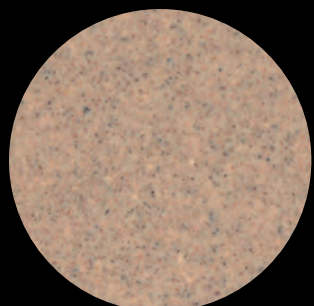
BL329 H



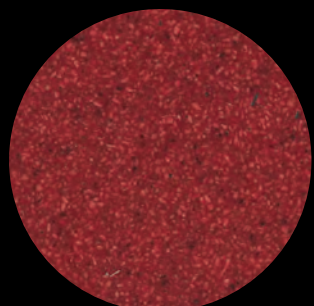
BL321 S



Y314 H



W302 M



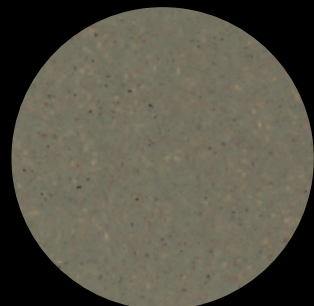
R311 L



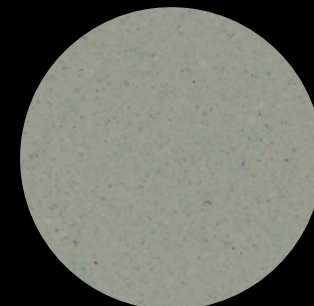
P308 L



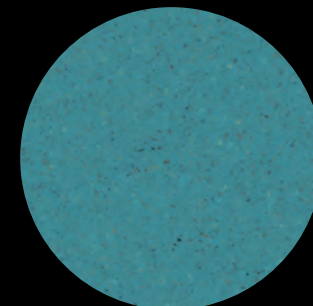
BR333 L



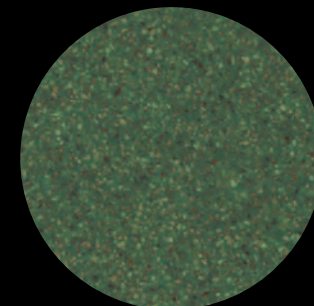
GR348 H



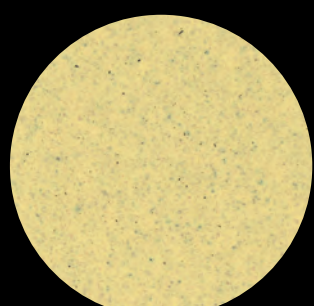
GR345 S



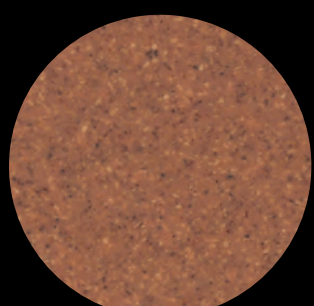
BL328 H



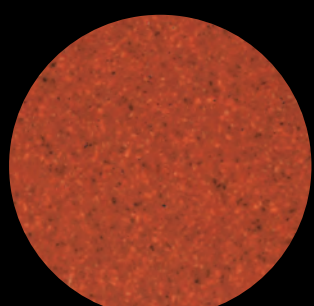
G319 L



Y315 S



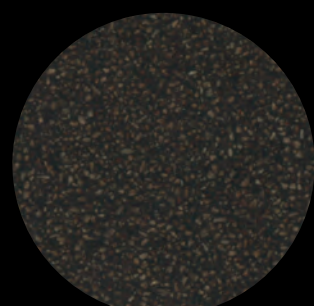
P304 L



O309 M



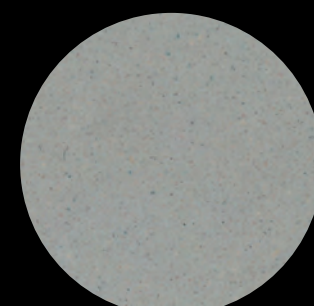
BL332 H



BR334 L



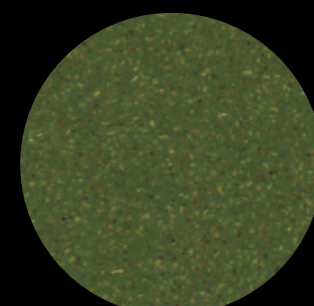
GR344 S



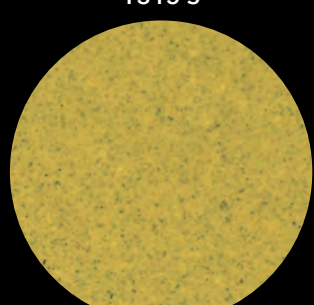
GR342 S



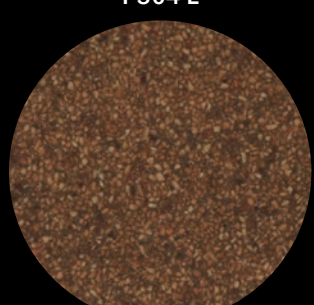
BL353 S



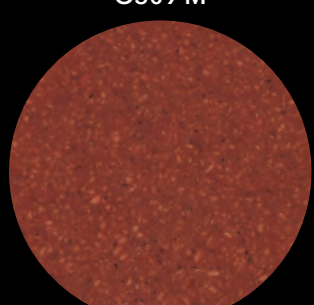
G320 H



Y316 S



N339



R310 M



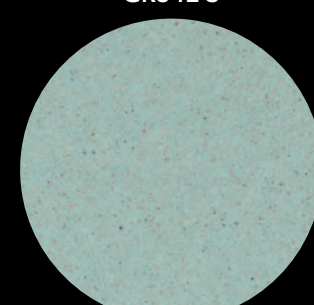
Z352 S



BR335 M



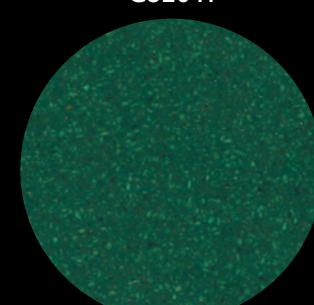
GR349 H



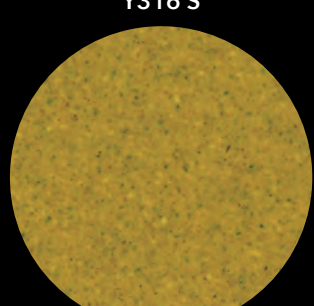
BL327 S



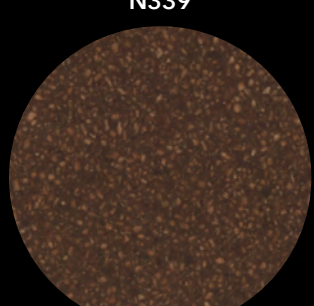
BL331 H



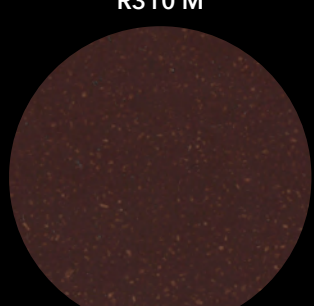
G326 H



Y317 S



N340 L



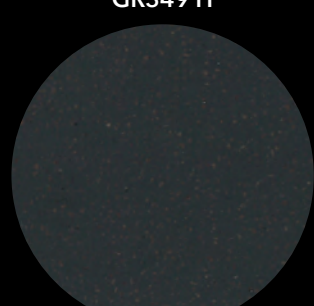
BR341 H



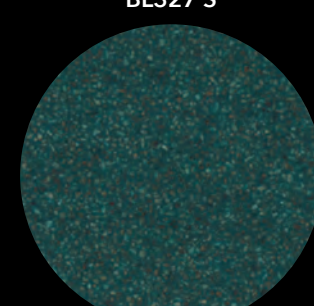
Z351 H



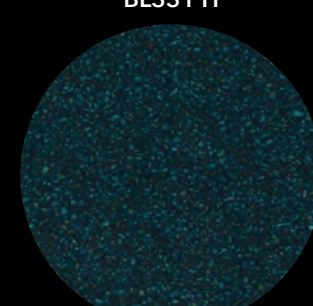
BR338 H



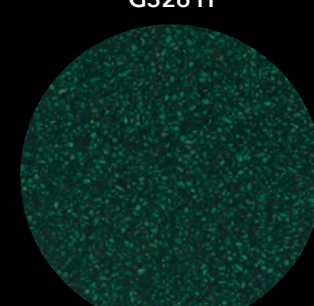
GR350 H



BL325 L



BL322 M



G323 H